

KaVo Laboratory

Excellent quality for dental technology.



KaVo handpieces – Laboratory drives

The stars among laboratory drives.

K5plus

The compact all-rounder.

K-POWERgrip

Effective and powerful.



1 QUALITY

2 PERFORMANCE

	K5plus	K-POWERgrip
Torque	4.5 Ncm	7 Ncm
Speed range	1,000 – 35,000 rpm ⁻¹	1,000 – 50,000 rpm ⁻¹
Performance	85	150 W
Counterclockwise rotation	Counterclockwise rotation up to 5,000 rpm ⁻¹	Counterclockwise rotation up to 5,000 rpm ⁻¹
Specials		Good haptics thanks to soft grip inlays
Clamping system	Holding power min. 70 N Chuck change with tool	Holding power min. 70 N Chuck change with tool
Dimensions	L = 149 mm D = 25-28 mm peeling grip D = 16 mm stylus position	L = 165 mm D = 25-29 mm oval for peeling grip D = 14 mm stylus position
Weight	Handpiece 216 g Cable 103 g	Handpiece 250 g Cable 105 g

K-ERGOgrip

The powerful, convenient solution.



K-ERGOgrip – The best of the best

- Ergonomic:
- In collaboration with the Fraunhofer Institute for work ergonomics with two gripping sleeves
- The lightest: Only 202 grams
- For left and right-handed users with 50,000 rpm⁻¹
- The strongest: with 7 Ncm and a chuck retention force of 100 N
- Robust, high tech engineering thanks to the KaVo single-shaft system

ERGONOMICS

3

1 QUALITY

- Maximum durability
- Easily serviced
- Maximum reliability
- Long service life

2 PERFORMANCE

- Powerful performance with a high torque of 7 Ncm.
- Speeds of up to 50,000 rpm in clockwise rotation.
- Optimum power transmission

3

ERGONOMICS

- Working posture that's gentle on the joints.
- Light and optimally balanced.
- Also for left-handers
- Lowest heating possible



K-ERGOgrip: Ergonomic grip, easy on the wrist.

No "buckling" of the wrist like with other handpieces

K-ERGOgrip

7 Ncm

1,000 – 50,000 rpm⁻¹

160 W

Counterclockwise rotation up to 50,000 rpm⁻¹

Ergonomic shape + second gripping sleeve

New chucking system + easy cleaning

Lowest heating possible

Holding power min. 100 N

Chuck change without tools

L = 140 mm short

D = 28–38 mm oval for peeling grip

D = 11 mm stylus position

Handpiece 202 g

Cable 107 g

K-Control TLC control units – Laboratory drives

Ideal working conditions for every situation.



Knee, table and foot control units

- Safety switch prevents unwanted speeds above 30,000 rpm
- Clockwise or counterclockwise rotation of up to 50,000 rpm depending on the handpiece
- Simple mounting on KaVo standard hanging rail

4 programmes

- Storage within 4 seconds despite 4-second speed control function
- 4-colour display
- Quick access to already used speed and torque settings for standard work

Speed programming	→	Individual speed settings for different materials, simply by pressing a button
Torque programming	→	Individual torque settings for careful material processing
Display with 4 background colours	→	For easy recognition of the respective programme
12 V relay output	→	For control of additional devices such as dust extraction units, lighting, etc.
Also compatible with other KaVo handpieces	→	Compatible with K-Powergrip, K5+, K5, K9, K11, K12
Speed safety switch at 30,000 rpm	→	Speeds greater than 30,000 rpm must be confirmed with a switch for safety reasons, as many cutters are limited to 30,000 rpm.
Attachment and handling based on previous K-Control control system	→	Knee device fastening plate as with the K-Control

COMPLETE SYSTEMS

CONTROL UNIT

LABORATORY HANDPIECE	K-Control TLC Knee (1.005.4209)	K-Control TLC Foot (1.005.4210)	K-Control TLC Table (1.005.4208)
K-ERGOgrip (1.003.7555) Performance & ergonomics	1.005.4206	1.005.4207	1.005.4204
K-POWERgrip (1.002.2916) Performance	1.007.2082	1.007.2084	1.007.2083
K5-Plus (1.001.6733) Ergonomics	1.009.4244	1.009.4245	1.009.4243

Control of the extraction unit

- Consumption control
- Control cable (1.000.7198)
- 12 V control socket

Accessories

- Care set (1.004.1149) with cleaning brush, clip to open the cap and felt pads (0.200.0692)
- Gripping sleeve, straight (1.003.8708)

Spare parts

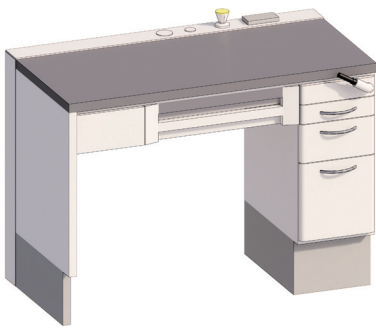
- Seal bearing set (1.004.0203) with front ball bearing, 2 O-rings and felt pads (0.200.0692)



MASTERspace – Laboratory equipment

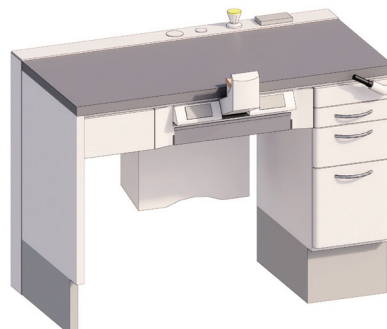
Discover more efficiency for your laboratory.

As one of the world's largest system providers, KaVo has accumulated decades of experience in high-quality laboratory equipment. We attach great importance to the highest quality and precision in our products, and to increasing the efficiency and motivation of your employees. KaVo MASTERspace combines quality and precision with a timelessly beautiful design and maximum functionality down to the smallest detail.



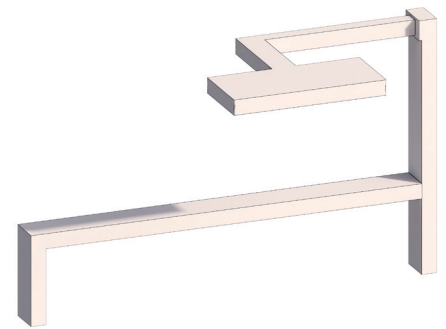
MASTERspace "Basic" single workstation

Without dust extraction, with the 120 ROCKdent worktop, System Base 4 with 2 waste drawers 50 mm | Mat. no. 1.000.3394



MASTERspace "Classic" single workstation

With SMARTair Evo dust extraction, extraction hood, front table, System Base 5 with 1 waste drawer 50 mm, 120 ROCKdent worktop | Mat. no. 1.000.3395



MASTERspace function package single workstation

Consisting of 1 LED single seat light and 1 work tray shelf | Mat. no. 1.011.8860

MASTERspace workplace

- Flexible island variations for 1, 2, 3, 4 people
- Individual and modular configuration or available as a "Basic" or "Classic" package
- High-quality materials such as ROCKdent worktops, hot-dip galvanised metal elements with powder coating
- Maximum ergonomics thanks to optional, retractable arm rests, extraction hood and function drawer
- Integrable DGUV-tested KaVo SMARTair Evo single-user workstation dust extraction system (included in the "Classic" package) or connection to central extraction possible
- Large selection of accessories such as the function package (LED work light, board for work trays), protective screen
- Diverse selection of front panel colours and table top coatings

ROCKdent worktop

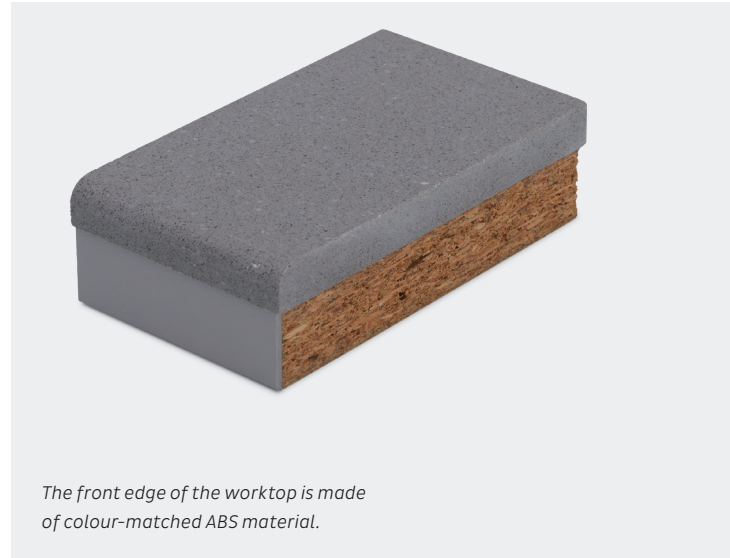
Worktops for dental workstations

- Worktops for technician workstations and for the functional area.
- The quartz composite ROCKdent consists of quartz granules and a resin.

These two natural products are combined in a special process to form an extremely strong and durable material.

The material is very easy to clean thanks to the smooth, non-porous and largely dirt-repellent surface; dental substances cannot penetrate the surface.

ROCKdent is more scratch resistant than the most durable natural stone, and is waterproof, stain resistant, fade resistant, dimensionally stable, resistant to frost, heat and corrosion, and has excellent mechanical strength.



The front edge of the worktop is made of colour-matched ABS material.



Scratch resistant



Fade resistant



Corrosion proof



True to size



Frostproof



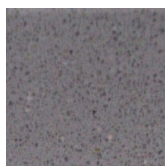
Water resistant



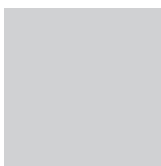
Heavy duty

MASTERspace

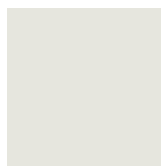
table top coatings



ROCKdent /
ROCKdent plus



FORMdent
agate grey*



Laminate
Carrara*



Multiplex
beech*

** only possible in the functional area (not possible for technical workstations)*

Front panels



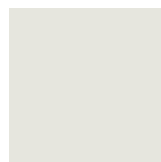
Gentian blue



Tourmaline -
anthracite



Orange



Carrara



Bordeaux



Stone grey

Base

FLEXspace – Laboratory equipment

Your individual laboratory solution.

FLEXspace

Create the personal workstation you desire.

- Flexible round, star island variations for 1, 2, 3, 4 people
- Individual and modular configuration or available as a package with a package price advantage
- Optimum ergonomics thanks to the height adjustment feature; can be adjusted from 82 to 94.5 cm in 6 positions
- Flexible workstation for left and right-handed users
- Hot-dip galvanised, powder-coated metal frame



FLEXspace "Comfort" package

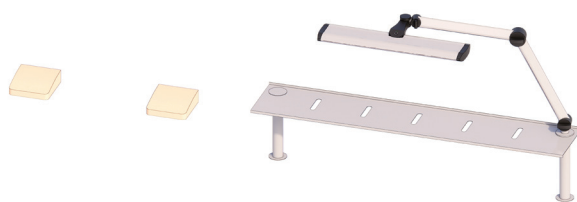
1x base unit | 1x waste drawer 50 | 1x SMARTair Evo |
1x extraction hood, front table | 1x suspended container 222 |
1x laminate top, straight | 2x side panels metal/gas/electric/
DL connections
Mat. no. 1.003.6375

- Integrated DGUV-tested KaVo SMARTair Evo single-user workstation dust extraction system or with connection to the central extraction system
- Wide range of accessories, additional function package (LED work light, shelf, arm rests)
- Wide selection of front panels and table top colours, protective panel
- Quick assembly



"Elegance" package

1x base unit | 1x waste drawer 50 | 1x SMARTair Evo FLEXspace
1x suspended container 123 | 1x optional drawer 2R | 1x extraction hood,
front table | 1x laminate top, straight | 1x ROCKdent inlay | 2x side
panels metal/decor | Gas/electric/DL connections | Safety burner hose
Mat. no. 1.003.6376



FLEXspace Function package

Contains: LED light, shelf and arm rests
Mat. no. 1.012.0500



FLEXspace LED light, Taneo TND

- Movable light with fixed connection and rotatable head joint
- Continuous dimming up to 10% with memory function
- Colour temperature: neutral white 5,000 K
- Colour rendering: >90
- Power consumption: approx. 30 W
- Voltage: 100-240 V, 50/60 Hz
- Luminaire luminous flux: approx. 2000 lm
- Includes adaptor for mounting on FLEXspace TAP
- Quick assembly

FLEXspace LED light | Mat. no. 1.012.0400



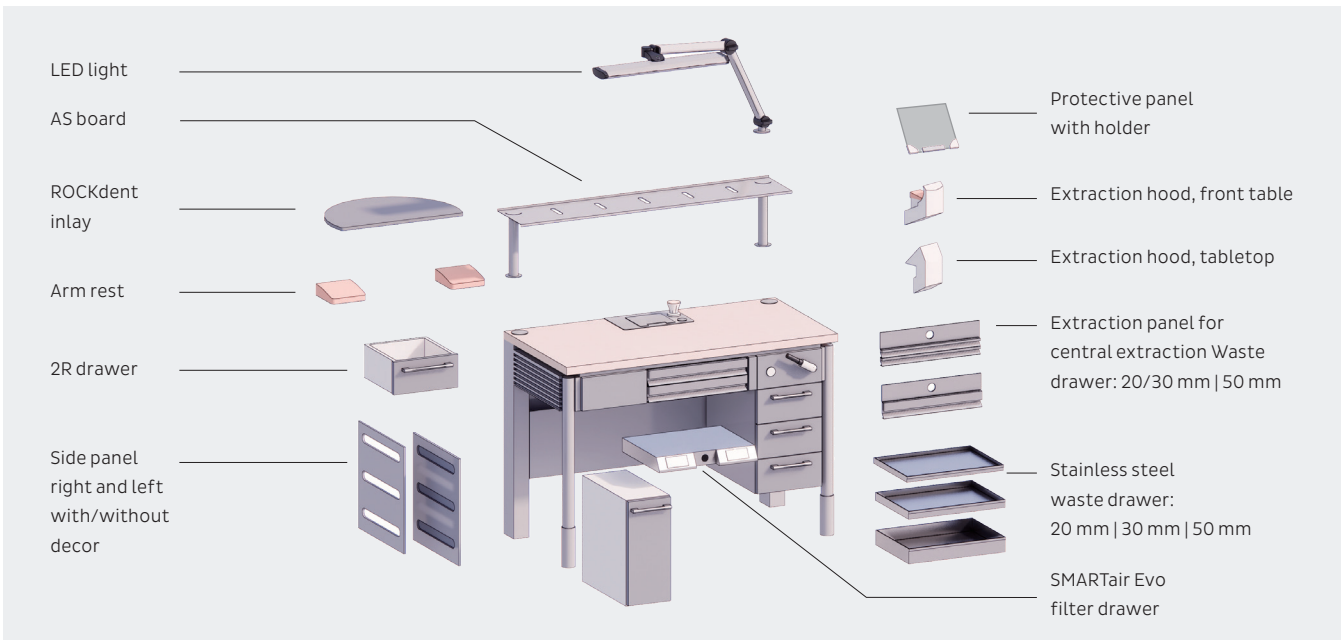
FLEXspace 3-station standard island

Mat. no. 1.002.3460



FLEXspace 3-station circular island

Mat. no. 1.002.3462



FLEXspace

Front panels



Anthracite

Bordeaux

Carrara

Gentian blue



Olive

Orange

Sunflower***

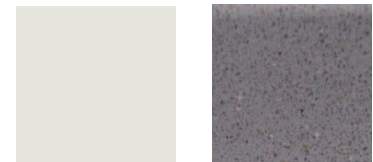
** Possible for the functional area and as a ROCKdent inlay for the technical workstation
*** Subject to availability

Table top coatings



Laminate anthracite

Multiplex beech



Laminate Carrara

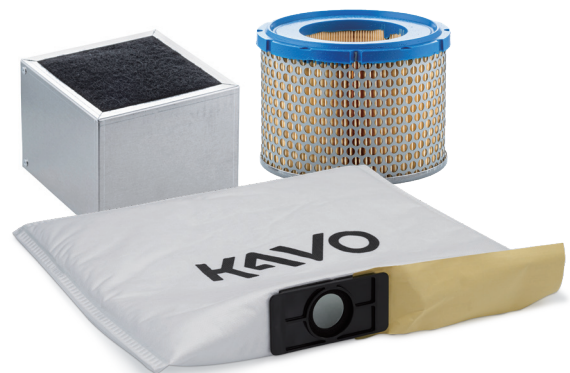
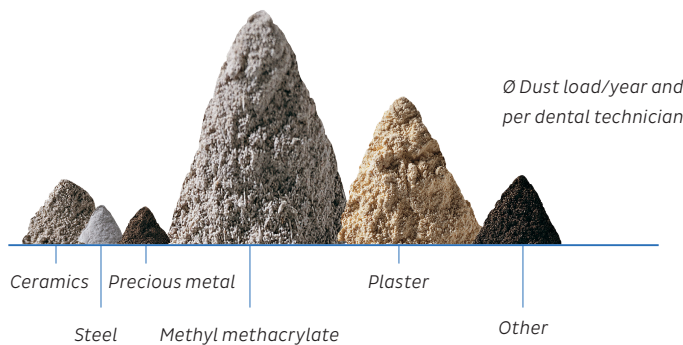
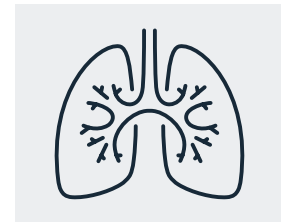
ROCKdent**

SMARTair Evo – Single-user workstation dust extraction system

The perfect protection against fine dust.

KaVo laboratory dust extraction systems are the product of over 35 years of experience in laboratory dust extraction – because your health matters.

The lungs are particularly at risk of harm from fine dust. Fine dust is just a fraction of the total inhalable dust found in the laboratory. Fine dust particles are smaller than 5 µm. Because it is so fine, it can easily reach the deepest airways, known as the alveolar space, triggering the dreaded dust inhalation pneumopathy as a result of constant tissue reaction. Protect yourself and your laboratory team with KaVo's dust extraction systems.



- Dust collection with triple filter system
- Only 1 extraction unit for all dust and vapour generated
- Simple and quick filter change

Benefits of the KaVo SMARTair Evo

- DGUV tested dust extraction capacity
- Improved vacuum and flow
- Compelling suction power from 15 to 30 l/sec
- Integrated automatic ON and OFF switch
- Automatic adjustment of suction power
- Quiet as a whisper
- Connection socket for foot switch or K-Control Connection cable
- Built-in motor protection
- Simple motor replacement
- Integration into third-party tables possible

One of a kind: Dust collection at its finest.

The triple filter concept with quick change system is the best example of KaVo's innovative power. The filter bag picks up all coarse dust. Particles smaller than 5 µm are picked up by the ultra-fine filter and the activated carbon filter effectively absorbs all vapours. The result is 99.995% dust retention. Like the blower and the electronics, the filters are part of a modular service concept that enables the elements to be replaced independently.

KaVo SMARTair Evo is available in 3 models:



*SMARTair mobile Evo: The mobile solution is primarily used in the functional area of the dental laboratory and where installation bottlenecks prevent an integrated solution.
Mat. no. 1.010.4075*

*SMARTair Evo FLEXspace: For integration into FLEXspace workstations. Includes 2 filter bags and ultra-fine filters and blower box holder with connecting hose
Mat. no. 1.010.4076*

*SMARTair Evo: For installation in MASTERspace system base 5 and 6 or in third-party installation kit
Mat. no. 1.010.4074*

Third-party installation kit

The third-party installation kit can integrate the SMARTair Evo 1.010.4074 into any table.

The third-party installation kit includes the following components:



*Installation kit for third-party tables
Mat. no. 0.650.7481*

*Carrier frame
Mat. no. 0.650.7031*

*Stainless steel drawer 50 mm 0.650.1271 or combination of stainless steel drawers 20 mm 0.650.2601 + 30 mm
Mat. no. 0.650.2591*

*Front table extraction hood 382 0.659.3300 or Tabletop extraction hood 384
Mat. no. 0.659.3330*

*Protective panels with holder
Mat. no. 0.659.3360*

MASTERspace and FLEXspace

Dry, plaster and casting area.

The KaVo MASTERspace and FLEXspace allow you to set up your function rooms according to your individual needs. Flexibility and functionality blend seamlessly together to form a functional area that leaves nothing to be desired. With KaVo you are well equipped in every aspect, because we value the highest material quality, robustness and durability, including in the functional area.



Discharge hole with waste container

Combination stainless steel sink, 40x40 cm, with plaster purification basin

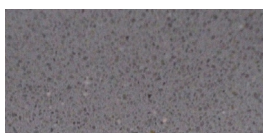
Choose from cabinets, drawers and seats. You can choose from many different panel materials such as ROCKdent, FORMdent, TERRAdent, stainless steel or laminate along with numerous front panel colours to match the rest of the furnishings.



FORMdent (laminate)



STEELdent (stainless steel)



ROCKdent (quartz stone)



TERRAdent (tile)

Flexibility that inspires

KaVo FLEXspace offers six different basic elements in two heights (83 and 91 cm) and three widths (30, 50 and 60 cm). This creates noticeably more flexibility, e.g. in dental laboratories and confined spaces.

Height of cabinet with pedestal:

83 or 91 cm.

Height of the worktop 4 cm

Total height: 87 or 95 cm.

Plaster area:

Stainless steel wall racks, electric silo spreaders, stainless steel worktops with various installations, plaster purification systems and much more

Casting area:

Soldering and sub-elements, hand air nozzle units, TERRAdent plates

Dry area:

Dental technology workstations, equipment tables, waste systems, dust extraction system and much more

Our project team will be able to advise and work with you so that you can plan the perfect laboratory for your individual needs.

KaVo SENSit® – Lab and office chair

Tailor-made for the dental laboratory.

In terms of form and functionality, the SENSit is ideally suited to working conditions in the laboratory. The high-quality materials, excellent manufacturing, perfect ergonomics and durability are also compelling features.



Office chair with arm rests that can be adjusted to 5 different heights



Lab chair



Fine-tuning for maximum seating comfort

1) The chair, with its two-zone seat profile, allows **you to make adjustments to your height.**

The back part of the seat is designed to ensure that the pelvis sits at the correct angle. The front seat can be inclined to reduce pressure on the thighs.



2) The spine receives optimal support through the **adjustable backrest.**

3) **Horizontal displacement of the seat** to optimally adjust the backrest to the body.



4) The backrest and seat are connected through joints using a **synchro mechanism.** This enables dynamic sitting, providing relief for ligaments, intervertebral discs, muscles and the back.



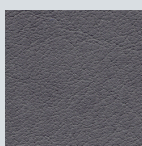
5) The **backrest resistance** can be individually adjusted to your weight.



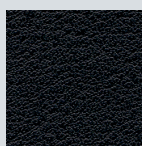
6) The robust aluminium **base** ensures a long service life.



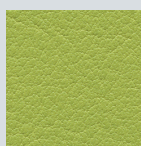
SENSit colours



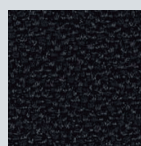
Skai anthracite



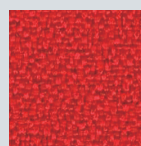
Skai black



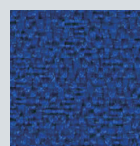
Skai limone



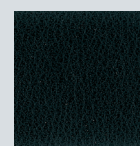
Extreme steel blue



Extreme Panama red



Extreme sapphire blue



Black leather

The SENSit is GS and TÜV certified

Articulators and functional diagnostics

Perfection that moves.



The ARCUSdigma 3 measures the movement paths of the jaw joints and the incisal point in real time and displays them three-dimensionally in the software. The data can be used in the PROTAREvo Digma to produce perfect dentures. All PROTAREvo articulators are characterised by the well-known KaVo precision, durability and various useful detailed solutions. The ARCUS and ARCUSEvo face bows help to determine the correct position of the upper jaw quickly, precisely and reliably.

ARCUSdigma 3

Movement becomes knowledge.



ARCUSdigma 3

- Provides data on temporomandibular joint (TMJ) movements in record time
- Higher quality individual prosthetics with less effort
- Precise, fast articulator programming thanks to the KaVo Transfer System without using a face bow
- Increased measuring accuracy thanks to the optical measuring method for profound TMJ diagnostics
- Simple operation through wireless data acquisition
- Safety for the practitioner – even with major restorations
- Modular, upgradeable software concept – adapted to your needs

Mat. no. 1.012.2320

Simplest data transfer (KaVo Transfer System)

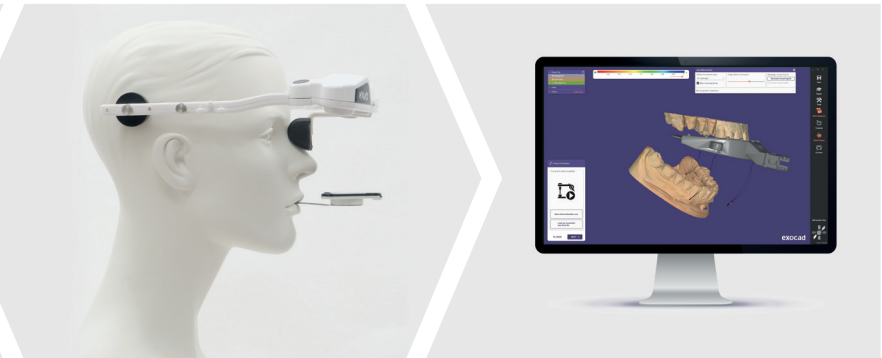
Analogue workflow



Thanks to the unique KaVo Transfer System (KTS), there is no need to use a face bow.

The upper jaw model is automatically placed in the centre of the KaVo PROTAREvo articulator. The ARCUSdigma 3 software calculates the dynamic setting parameters for the position of the model in the PROTAREvo articulator. Difficulties in positioning the model in the articulator, as can occur when using a face bow, are a thing of the past. The ARCUSdigma software transfers the dynamic setting parameters to the position of the model in the articulator.

Digital workflow









Alternatively, the movement data can be transferred directly to CAD software. With additional information obtained (e.g. chewing cycles), dentures can be designed with the highest precision in a digital workflow.

Alternatively, traditional transfer with a face bow via the arbitrary axis is still possible.

PROTARevo

Dental articulators for perfect precision and premium handling.

Distinctive features of the KaVo PROTARevo models

Articulator model	Specification	Area of application
 <p>PROTARevo 2 <i>Mat. no. 1.002.3305</i></p>	<ul style="list-style-type: none"> • Articulated track fixed 30° to CE • Bennett angle 15° • Plastic centric lock 	<ul style="list-style-type: none"> • Student training
 <p>PROTARevo 3 <i>Mat. no. 1.002.3309</i> <i>(also available without split cast)</i></p>	<ul style="list-style-type: none"> • Like the PROTARevo 2 plus • Stainless steel centric lock 	<ul style="list-style-type: none"> • Student training
 <p>PROTARevo 5 <i>Mat. no. 1.002.3313</i> <i>(also available without split cast)</i></p>	<ul style="list-style-type: none"> • Like the PROTARevo 3plus • Adjustable articulated track • -25° to 75° CE 	<ul style="list-style-type: none"> • Student training • Dental technician training • Simple mid-value dental work
 <p>PROTARevo 5B <i>Mat. no. 1.002.3317</i> <i>(also available without split cast)</i></p>	<ul style="list-style-type: none"> • Like the PROTARevo 5 plus • Adjustable Bennett angle 	<ul style="list-style-type: none"> • Dental technician training • Solid dental technology
 <p>PROTARevo 7 <i>Mat. no. 1.002.3321</i> <i>(also available without split cast)</i></p>	<ul style="list-style-type: none"> • Like the PROTARevo 5B plus • ISS adjustable 0-1.5 mm • Protrusion adjustable 0-1.5 mm • Retrusion adjustable 0-1 mm • Distraction adjustable 0-1.5 mm 	<ul style="list-style-type: none"> • High-quality restorations • Full prosthetics • Recommended in combination with "Adjustable incisal table"
 <p>PROTARevo 9 <i>Mat. no. 1.002.3325</i> <i>(also available without split cast)</i></p>	<ul style="list-style-type: none"> • Like the PROTARevo 7 • With P/D/R insert: • Protrusion adjustable 0-6 mm • Retrusion adjustable 0-1 mm • Distraction adjustable 0-6 mm 	<ul style="list-style-type: none"> • High-quality bite splint technology • Recommended in combination with "Adjustable incisal table"
<p>PROTARevo Digma (split cast only) <i>Mat. no. 1.005.4121</i></p>	<ul style="list-style-type: none"> • Like the PROTARevo 7 • Instead of protrusion and distraction, the shift angle can be adjusted on the respective working side -20° to +20° 	<ul style="list-style-type: none"> • HIGH end restorations in connection with ARCUSdigma data • Accessories included: adjustable incisal table and transfer table for maxillary bite fork AD3

ARCUS and ARCUSEvo

KaVo face bow: Your patients will thank you for it.

- The face bow that captures the position of the upper jaw in less than 3 minutes – a few simple steps, no assistance needed!
- Minimise occlusal adjustments, especially when raising and lowering the bite
- The ARCUSEvo face bow can be put on the patient by one person very quickly
- Fast, precise and safe
- The design of the ear tips allows unrestricted communication with the patient.



Arcus



ARCUSEvo

Face bow

Specification

Face bow	Specification
ARCUS ARCUS: Mat. no. 0.622.5000	<ul style="list-style-type: none"> • Referencing according to CE+FH • Fixed glabellar support • Adjustment via parallel joint • Mechanically very solid
ARCUSEvo ARCUS: Mat. no. 0.622.5000	<ul style="list-style-type: none"> • Referencing according to CE+FH • Adjustable glabellar support • Ear tips can be adjusted in parallel with a rotary wheel • Very easy to handle • Recording for ARCUSdigma 2 sensors



PROTARevo Digma Split Cast

Always in the best position: Dental technology applications.

As one of the world's largest system providers, KaVo has decades of expertise in high-quality laboratory equipment.

Backed by a powerful team of experienced planning specialists, we develop furnishing solutions that are tailored to your specific needs. Increasing efficiency and motivating your employees are the focus of our work. We meet these high standards by optimising work processes and planning and designing your laboratory equipment with ergonomics and functionality in mind.



Flexible islands:

Whether it's a 2, 3 or 4-person island with a single or double row arrangement, the technical workstations can be set up to save space as required. The function rooms are planned according to your specific requirements.

Realistic preliminary planning including:

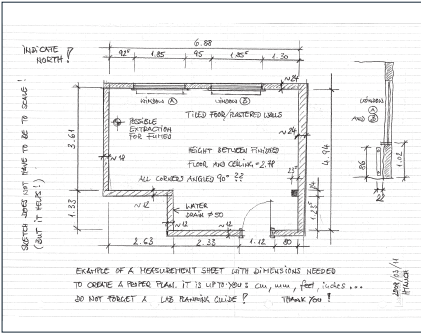
Equipping of the laboratory, including technology and furniture, is optimised and realistically visualised by our room and installation planning team. This gives you a realistic simulation of your facilities.

Planning service for labs

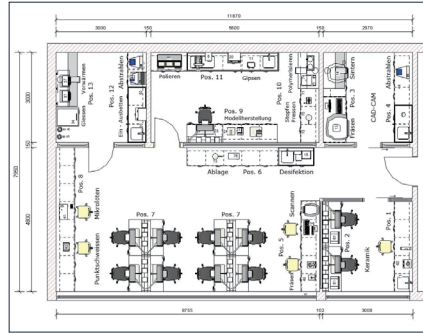
Our experience –your benefit

Revit Architecture and your lab

Site measuring



Island planning



Installation planning

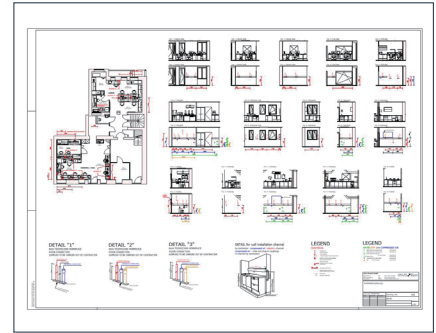


Photo-realistic presentation



3D panoramic view available via link or QR code
<https://api2.enscape3d.com/v3/view/325346c2-348f-4fc5-bf5f-be04c161cf57>

Dental excellence in every area



Practice equipment

KaVo treatment units, operating lights, dentists' chairs, patient communication systems and other accessories for the dental practice.



Instruments

Dental handpieces and contra-angle handpieces, turbines, air polishing handpieces and small devices for all areas of application from diagnostics via prophylaxis to restoration, surgery, endodontics and instrument care and maintenance.



X-ray

Intraoral X-ray, sensors and imaging plates, panoramic and Ceph imaging, as well as dedicated DVT equipment for any indication in dentistry.

The products, equipment and services shown and described in this catalogue are not available in all countries. All information corresponds to the knowledge available at the time of printing. KaVo Dental GmbH does not accept any liability for discrepancies in colour and form in the images, errors or misprints and reserves the right to make changes to the brochures at any time. Reprinting, even in part, is only authorised with the approval of KaVo Dental GmbH.

KaVo™ is either a registered trademark or a trademark acquired through use by KaVo Dental GmbH in the United States and/or in other countries. All other trademarks are property of their respective owners.